

# MONTHLY MEMBERSHIP PROGRESS REPORT

LOCATION COLORADO

District 6 C

Results as of: 5/31/2022

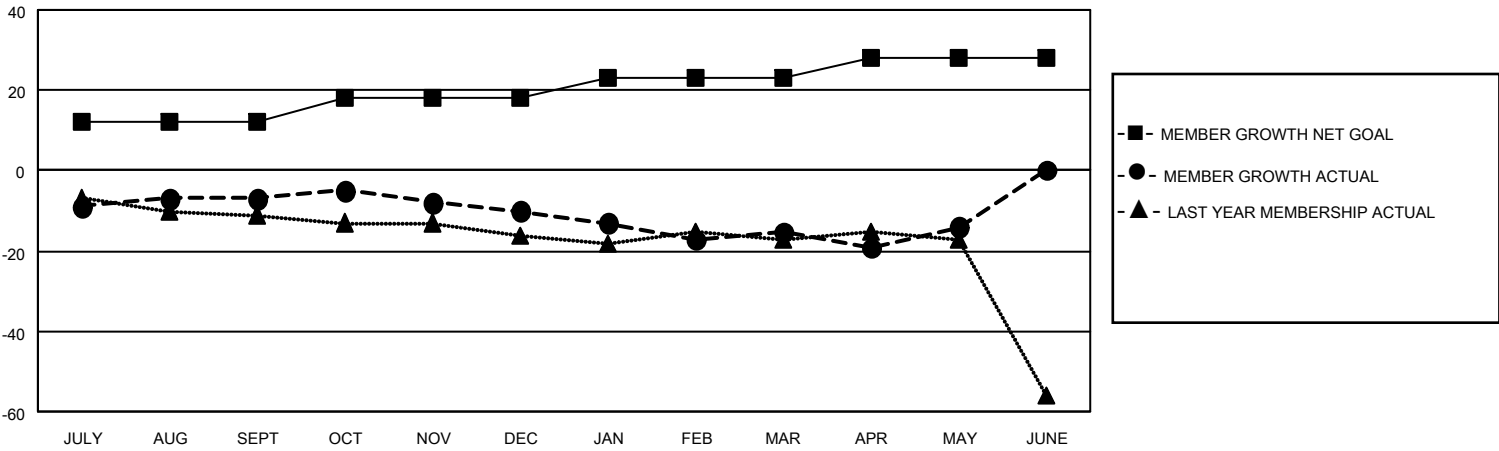
| Clubs                 |               |           |               |
|-----------------------|---------------|-----------|---------------|
| RESULTS FOR 2021-2022 |               |           |               |
| QUARTER               | NEW CLUB GOAL | NEW CLUBS | DROPPED CLUBS |
| JULY/AUG/SEPT         | 0             | 0         | 2             |
| OCT/NOV/DEC           | 0             | 0         | 0             |
| JAN/FEB/MAR           | 1             | 0         | 0             |
| APR/MAY/JUNE          | 0             | 0         | 0             |

| Members               |                        |                      |  |
|-----------------------|------------------------|----------------------|--|
| RESULTS FOR 2021-2022 |                        |                      |  |
| QUARTER               | MEMBER GROWTH NET GOAL | MEMBER GROWTH ACTUAL | DROPPED MEMBERS ACTUAL (including transfers) |
| JULY/AUG/SEPT         | 12                     | 7                    | 12   |
| OCT/NOV/DEC           | 6                      | 8                    | 10   |
| JAN/FEB/MAR           | 5                      | 13                   | 16   |
| APR/MAY/JUNE          | 5                      | 6                    | 5  |

**GOALS AND ACTUAL NEW CLUBS CUMULATIVE**



**GOALS AND ACTUAL MEMBERS CUMULATIVE**



**DROPPED CLUBS: 2**

11 CLUBS OF 28 ADDED 1 OR MORE NEW MEMBERS

**GENDER DISTRIBUTION**

|                      |              |
|----------------------|--------------|
| MALE                 | 301 (58.22%) |
| FEMALE               | 216 (41.78%) |
| NON BINARY           | 0 (0.00%)    |
| PREFER NOT TO ANSWER | 0 (0.00%)    |

**DROPPED MEMBERS**

[CLICK HERE FOR CUMULATIVE MEMBERSHIP DATA](#)

|                |           |
|----------------|-----------|
| DECEASED       | 6         |
| CLUB CANCELLED | 0         |
| OTHER          | 37        |
| <b>TOTAL</b>   | <b>43</b> |

|                                 |    |
|---------------------------------|----|
| TOTAL FAMILY UNIT MEMBERS       | 78 |
| FAMILY MEMBERS PAYING HALF DUES | 40 |